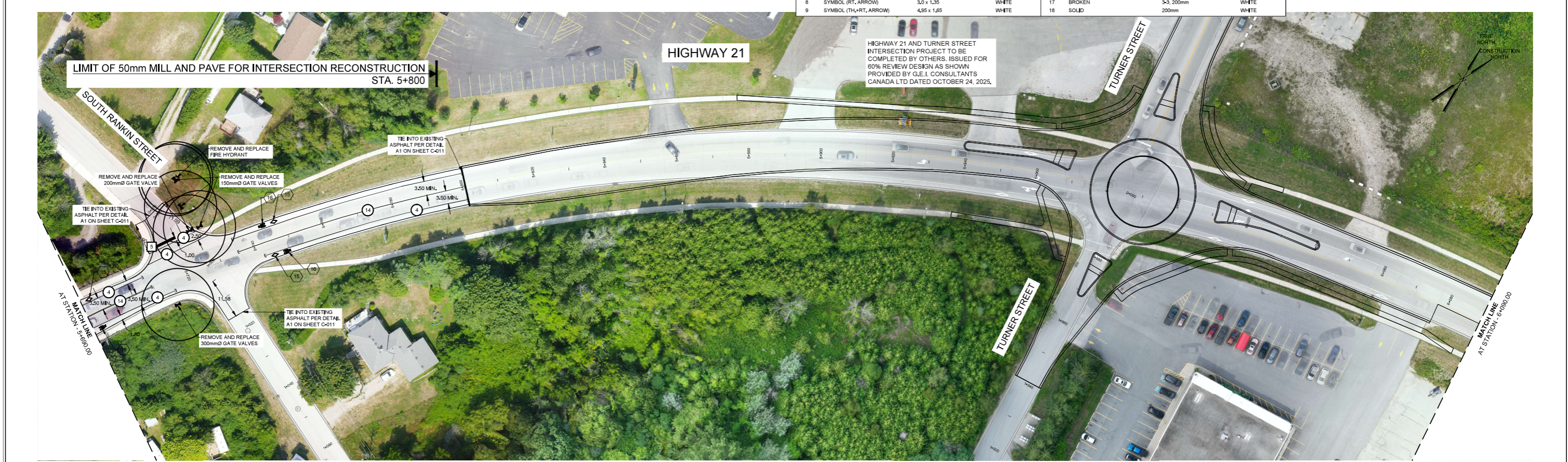


PAVEMENT MARKINGS LEGEND

PAVEMENT MARKING	PAVEMENT MARKING, DURABLE	SYMBOLS, DURABLE	SYMBOLS	LIMITS OF MARKINGS	
1 DOUBLE SOLID	2x100mm	YELLOW	10 SYMBOL (TH+LT, ARROW)	4,95 x 1,85	WHITE
2 BROKEN	3-3, 100mm	WHITE	11 DOUBLE - SOLID/BROKEN	100mm 3-6, 100mm	YELLOW
3 BROKEN	3-6, 100mm	WHITE	12 BROKEN	3-6, 100mm	YELLOW
4 SOLID	100mm	WHITE	13 CROSSWALK	100mm	WHITE
5 STOP (DURABLE)	600mm	WHITE	14 SOLID	100mm	YELLOW
6 SYMBOL (TH, ARROW)	3,45 x 0,75	WHITE	15 SYMBOL (DIAMOND)	4,0 x 1,0	WHITE
7 SYMBOL (LT, ARROW)	3,0 x 1,35	WHITE	16 SYMBOL (BICYCLE)	2,0 x 1,2	WHITE
8 SYMBOL (RT, ARROW)	3,0 x 1,35	WHITE	17 BROKEN	3-3, 200mm	WHITE
9 SYMBOL (TH+RT, ARROW)	4,95 x 1,85	WHITE	18 SOLID	200mm	WHITE



NOT FOR CONSTRUCTION

No.	Issue / Revision	Date	Auth.
1	ISSUED FOR 60% REVIEW	25/10/17	
2	ISSUED FOR PIC	25/10/31	

Notes
1. This drawing is the exclusive property of R. J. Burnside & Associates Limited. The reproduction of any part without prior written consent of this office is strictly prohibited.
2. The contractor shall verify all dimensions, levels, and datum on site and report any discrepancies or omissions to this office prior to construction.
3. This drawing is to be read and understood in conjunction with all other plans and documents applicable to this project.

BURNSIDE
R.J. Burnside & Associates Limited
3 Romell Crescent,
Collingwood, Ontario, L9Y 4J6
telephone 1-800-265-9662
web www.burnside.com

Client
TOWN OF SAUGEEN SHORES
600 TOMLINSON DRIVE
PORT ELGIN, ONTARIO
N8H 2C0

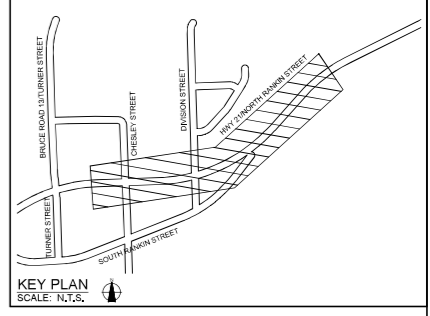
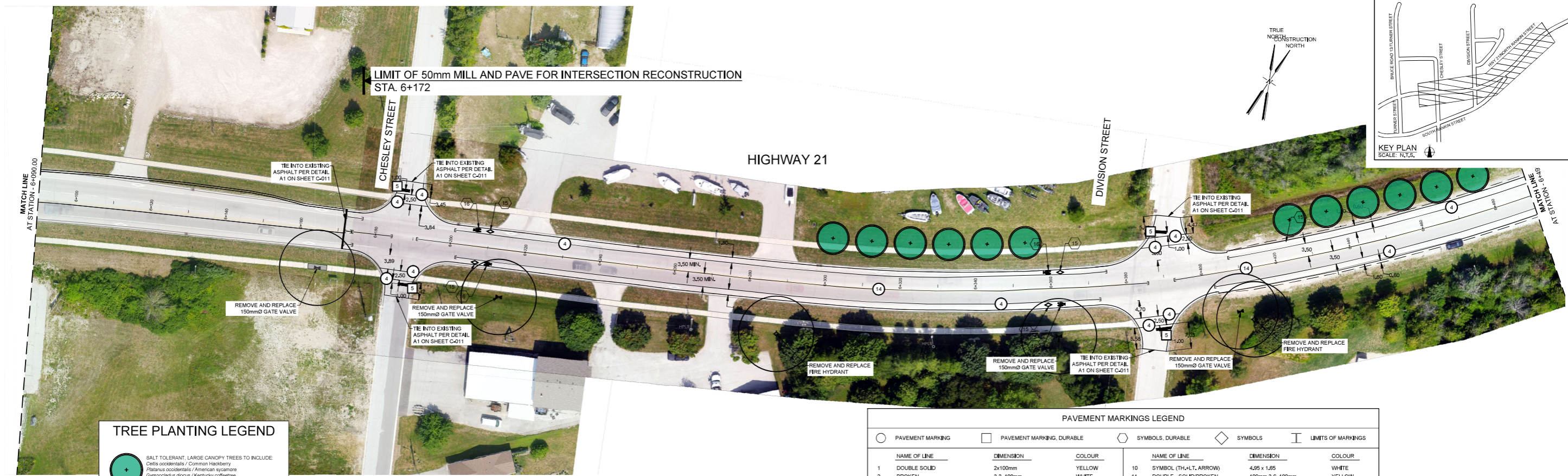
Drawing Title
HIGHWAY 21 RESURFACING

PLAN
HIGHWAY 21
STA. 5+290 TO STA. 6+090

Drawn	Checked	Designed	Checked	Date
C.T.	P.H.	P.H.	M.L.	25/11/04
Project No.	Contract No.	Revision No.		
300060441	RFP-2025-6320-6878	1		

Scale: 1:500

C-005



TREE PLANTING LEGEND

	SALT TOLERANT, LARGE CANOPY TREES TO INCLUDE: Celtis occidentalis / Common Hackberry Platanus occidentalis / American Sycamore Gymnocladus dioica / Kentucky coffeetree Quercus rubra / Red oak
	NEW TREES PLANTED AS PART OF HIGH STREET REVITALIZATION WORKS
	SALT TOLERANT, SMALL STATURE DECIDUOUS TREES TO ACCOMMODATE OVERHEAD HYDRO LINES TO INCLUDE: Ameniastris arborea / Downy serviceberry Cercis canadensis / Redbud Ptelea trifoliata / Hop tree Tilia cordata / Summer Sycamore

PAVEMENT MARKINGS LEGEND

NAME OF LINE	DIMENSION	COLOUR	NAME OF LINE	DIMENSION	COLOUR
1 DOUBLE SOLID	2x100mm	YELLOW	10 SYMBOL (TH-LT, ARROW)	4,95 x 1,95	WHITE
2 BROKEN SOLID	3-3, 100mm	WHITE	11 DOUBLE - SOLID/BROKEN	100mm 3-6, 100mm	YELLOW
3 BROKEN	3-6, 100mm	WHITE	12 BROKEN	3-6, 100mm	YELLOW
4 SOLID	100mm	WHITE	13 CROSSWALK	100mm	WHITE
5 STOP (DURABLE)	600mm	WHITE	14 SOLID	100mm	YELLOW
6 SYMBOL (TH, ARROW)	3,45 x 0,75	WHITE	15 SYMBOL (DIAMOND)	4,0 x 1,0	WHITE
7 SYMBOL (LT, ARROW)	3,0 x 1,25	WHITE	16 SYMBOL (BICYCLE)	2,0 x 1,2	WHITE
8 SYMBOL (RT, ARROW)	3,0 x 1,25	WHITE	17 BROKEN	3-3, 200mm	WHITE
9 SYMBOL (TH-RT, ARROW)	4,95 x 1,95	WHITE	18 SOLID	200mm	WHITE



NOT FOR CONSTRUCTION

No.	Issue / Revision	Date	Auth.
1	ISSUED FOR 60% REVIEW	25/10/17	
2	ISSUED FOR PIC	25/10/31	

Notes	1. This drawing is the exclusive property of R. J. Burnside & Associates Limited. The reproduction of any part without prior written consent of this office is strictly prohibited.
2. The contractor shall verify all dimensions, levels, and datum on site and report any discrepancies or omissions to this office prior to construction.	
3. This drawing is to be read and understood in conjunction with all other plans and documents applicable to this project.	

BURNSIDE
 R.J. Burnside & Associates Limited
 3 Romell Crescent,
 Collingwood, Ontario, L9Y 4J6
 telephone 1-800-265-0662
 web www.burnside.com

Client
TOWN OF SAUGEEN SHORES
 600 TOMLINSON DRIVE
 PORT ELGIN, ONTARIO
 N2H 3C0

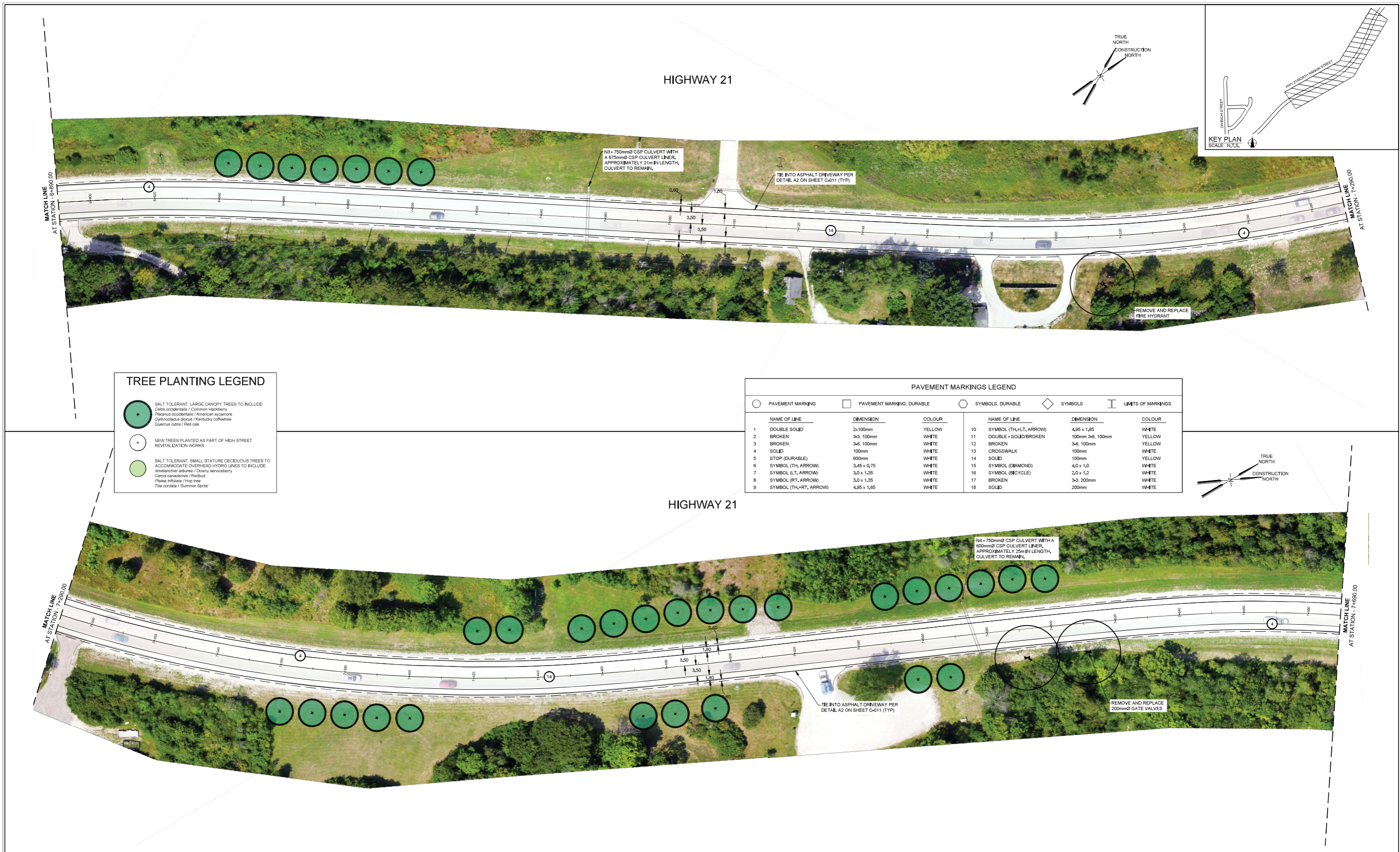
Drawing Title
HIGHWAY 21 RESURFACING

PLAN
HIGHWAY 21
 STA. 6+090 TO STA. 6+890

Drawn	Checked	Designed	Checked	Date
CZL	PJH	PJH	MAL	26/11/04
Project No.	Contract No.	Revision No.		
300060441	RFP-2025-6320-6878	1		

Scale
 1:500

Drawing No.
C-006



TREE PLANTING LEGEND

	SALT TOLERANT, LARGE CANOPY TREES TO INCLUDE: Celtis occidentalis / Common Hackberry Platanus occidentalis / American Sycamore Gymnocladus dioica / Kentucky Coffeetree Quercus rubra / Red oak
	NEW TREES PLANTED AS PART OF HIGH STREET REVITALIZATION WORKS
	SALT TOLERANT, SMALL STATURE DECIDUOUS TREES TO ACCOMMODATE OVERHEAD HYDRO LINES TO INCLUDE: Amenia pedunculata / Downy serviceberry Cercis canadensis / Redbud Ptelea trifoliata / Hop tree Tilia cordata / Summer Sycamore

PAVEMENT MARKINGS LEGEND

NAME OF LINE	DIMENSION	COLOUR	NAME OF LINE	DIMENSION	COLOUR
1 DOUBLE SOLID	2x100mm	YELLOW	10 SYMBOL (TH+LT, ARROW)	4,95 x 1,85	WHITE
2 BROKEN	3-3, 100mm	WHITE	11 DOUBLE - SOLID/BROKEN	100mm 3-6, 100mm	YELLOW
3 BROKEN	3-6, 100mm	WHITE	12 BROKEN	3-6, 100mm	YELLOW
4 SOLID	100mm	WHITE	13 CROSSWALK	100mm	WHITE
5 STOP (DURABLE)	600mm	WHITE	14 SOLID	100mm	YELLOW
6 SYMBOL (TH, ARROW)	3,45 x 0,75	WHITE	15 SYMBOL (DIAMOND)	4,0 x 1,0	WHITE
7 SYMBOL (LT, ARROW)	3,0 x 1,35	WHITE	16 SYMBOL (BICYCLE)	2,0 x 1,2	WHITE
8 SYMBOL (RT, ARROW)	3,0 x 1,35	WHITE	17 BROKEN	3-3, 200mm	WHITE
9 SYMBOL (TH+RT, ARROW)	4,95 x 1,65	WHITE	18 SOLID	200mm	WHITE

NOT FOR CONSTRUCTION

No.	Issue / Revision	Date	Auth.
1	ISSUED FOR 60% REVIEW	25/10/17	
2	ISSUED FOR PIC	25/10/31	

Notes	1. This drawing is the exclusive property of R. J. Burnside & Associates Limited. The reproduction of any part without prior written consent of this office is strictly prohibited.
2. The contractor shall verify all dimensions, levels, and datum on site and report any discrepancies or omissions to this office prior to construction.	
3. This drawing is to be read and understood in conjunction with all other plans and documents applicable to this project.	

BURNSIDE
R.J. Burnside & Associates Limited
3 Rensell Crescent,
Collingwood, Ontario, L9Y 4J6
telephone 1-800-265-9662
web www.burnside.com

Client
TOWN OF SAUGEEN SHORES
600 TOMLINSON DRIVE
PORT EGLIN, ONTARIO
N2H 2C0

Drawing Title
HIGHWAY 21 RESURFACING

PLAN
HIGHWAY 21
STA. 6+890 TO STA. 7+690

Drawn	Checked	Designed	Checked	Date
C.T.	P.H.	P.H.	M.L.	25/11/04
Project No.	Contract No.	Revision No.		
300060441	RFP-2025-6320-6878	1		

Scale
1:500

C-007

